



Roth Built Homes

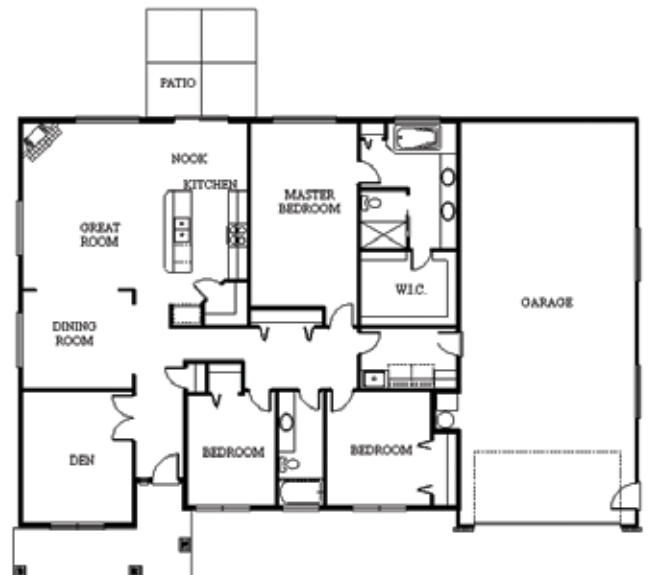
544 SE MIFFLIN ST., DALLAS

\$314,950 • 2,085 SQUARE FEET • 3 BEDROOMS • 2 BATHROOMS

This Roth Built home contains many upgrades that are standard features in all Roth Built homes. The granite slab countertops, professional series appliances, custom hickory cabinets and hardwood floors give that rich luxurious feel that is perfect for entertaining guests or enjoying a cozy family meal. The vaulted ceilings and open floor plan create a light and airy atmosphere that any homeowner will appreciate. The master suite, equipped with a jetted tub, double vanities and a large walk-in closet, provides this room with an abundance of luxury and comfort. This home comes with a unique, spacious four-car tandem garage and more than 500 square feet of attic storage.

FEATURES

- Slab granite countertops
- Under-mount sink in the kitchen
- 42" custom hickory cabinets
- Professional series appliances including a refrigerator
- Hardwood flooring in the entry, kitchen and nook
- Tile in the utility room and bathroom
- 9' ceilings with vaults
- Front and back landscaping with a fenced backyard and sprinkler system
- Four-car tandem garage
- 500+ square feet of attic storage
- Brick accents



Roth Built Homes
 Tim Roth
 503.769.5035
 License: 123159
www.rothbuilthomes.com