



Boylan Homes

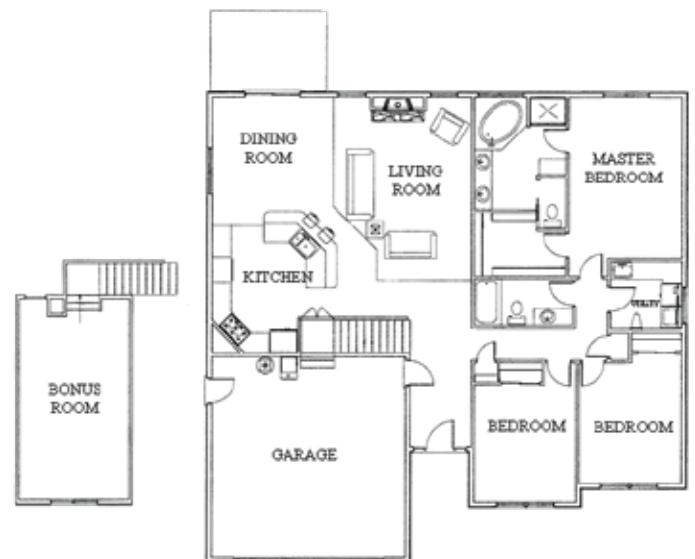
785 SE HAWTHORNE AVE., DALLAS

\$359,900 • 2,210 SQUARE FEET • 4 BEDROOMS • 2 BATHROOMS

Boylan Homes is a family-owned-and-operated local business. We offer quality homes in a charming, small-town setting that is centrally located near Salem, McMinnville and Corvallis. All of our homes feature the latest structural building materials, appliances, floor coverings and interior/exterior colors. We offer a wide variety of floor plans. We then suggest additional options and features to customize our homes to suit you. We work personally with each client to create a living space that will be enjoyed for years. For 2008, Boylan Homes is proud to present the Bradford. This home is located in River Gleann Phase 5, situated close to schools, an aquatic center, playing fields, and it is a quick drive to Highway 22 or Highway 99 West.

FEATURES

- Certified energy efficiency by Earth Advantage™
- Granite countertops with a travertine backsplash in the kitchen
- Premium appliances for the gourmet chef, including a refrigerator
- 6" Rustic River smoked oak plank flooring
- Full-height kitchen cabinets with glass door accents
- Floor-to-ceiling stone fireplace with a granite hearth
- Hand-troweled walls in the great room, kitchen and master room
- Knotty alder cabinets throughout
- Knotty alder trim and interior doors
- Master suite with double sinks and a 5' shower, plus a soaking tub
- Utility has a built-in sink and a folding area
- Full landscaping with irrigation and a gated RV pad



Boylan Homes
Clint and Eli Boylan
503.507.1618
License: 157774