



RP Construction

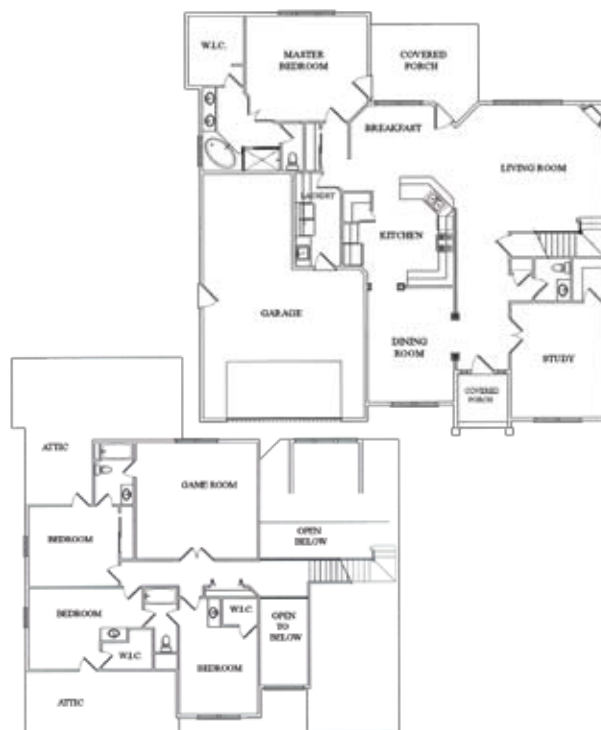
764 SHELOKUM DR., SILVERTON

\$579,900 • 3,728 SQUARE FEET • 4 BEDROOMS • 3½ BATHROOMS

Green building practices add value to this impressive custom home designed by Randy. This home is exquisite both inside and out; even the rear elevation is something to behold. It is situated in the exclusive development of Abiqua Heights in picturesque Silverton and is close to great schools, shopping, beautiful parks and historic downtown. All lots in this development have generous yards. Ask about special incentives for purchase during Tour dates.

FEATURES

- Large luxurious master suite on the main floor with outside living access
- Separate exercise room and covered outdoor entertaining
- Each bedroom has a private bathroom or a Jack-n-Jill bathroom arrangement
- Large kitchen with custom hickory cabinetry and granite slab countertops
- Upgraded stainless-steel kitchen appliances
- Granite slab countertops throughout the house
- Soaring vaulted and two-story ceilings
- Large vaulted option room with a closet off of the entry
- Formal and informal entertaining
- Extensive use of solid, hand-hewn hickory flooring
- Landscaped yard with impressive rock walls
- Plumbed and wired for vacuum, Cat 5 and security systems



RP Construction



RP Construction
Randy Parsons
503.371.4620
License: 135818
www.mybuilder.us