



Providence Homes, LLC

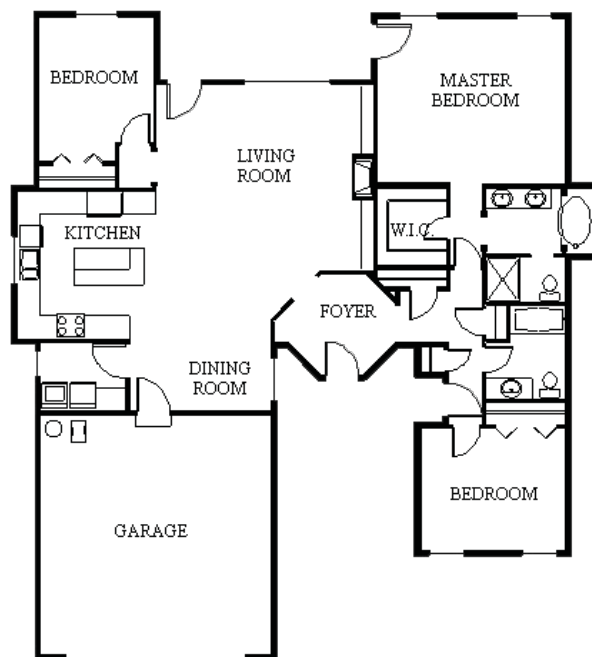
312 GADWELL AVE. SE, SALEM

\$300,000 • 1,750 SQUARE FEET • 3 BEDROOMS • 2 BATHROOMS

Providence Homes welcomes you to view one of its best-selling floor plans, "The Verona." Its functional living area continues to attract new homeowners to our South Salem location. Holder Estates features 43 homesites just up the street from where you want to go. This Tour home also includes central A/C—an upgraded feature from our normal home specifications for this subdivision.

FEATURES

- Tile entry floor and backsplash
- Insulated vinyl windows
- Stainless-steel appliances
- Microwave and dishwasher included
- Gas cooktop
- Water heater
- Forced-air gas heat
- Drywall and taped garage
- Architectural composition roof
- Full landscaping with UG sprinklers
- Fully fenced with 6'-high cedar fencing
- Cement-based board siding on all sides



Providence Homes, LLC
 Bob Cavell and Steve Hurley
 503.363.7470
 License: 147868