

Timbercraft Homes Inc.

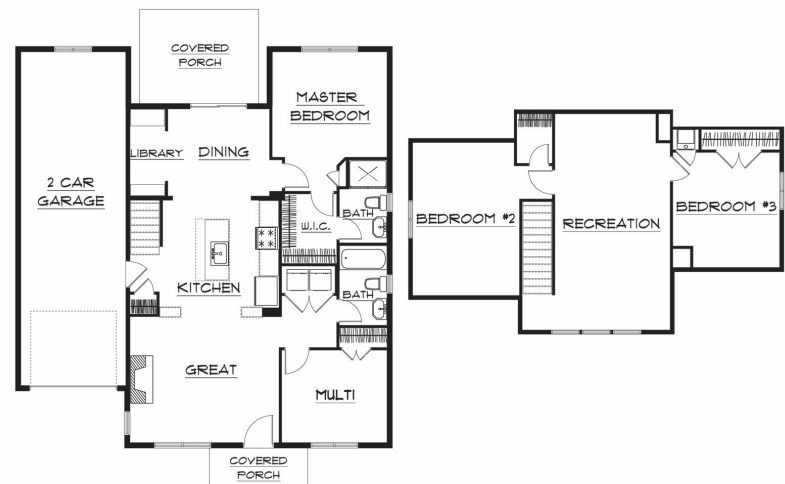
1758 SCHOOLHOUSE COURT NW, SALEM | 1,820 SQ FT | 4 BR, 2 BA | \$ 267,900

A few of you I've bumped into around town these last many months have asked, "Is this the year?" Yes, this is the year I have decided to design and build my cozy little bungalow. The timing is right and the place couldn't be better. In this right-sized home, however, it has been difficult for me to delete the extras I've grown accustomed to include, so....I've added more. :)

For those of you sizing up or down, this home is perfect. This isn't your ordinary home or neighborhood. My pleasure is the challenge of continuing the warmth and love into even a right-sized home and budget. I enjoy seeing the validation in your bright faces as you walk through the door as in each year past. A smile, a nod, and three words spoken: "This is it." I look forward to seeing you all, my friends from past and present, on tour again this year. I have just the homesite available for you in wonderful Schoolhouse Estates and would love to someday soon make your dreams a reality. Make this day your someday.

features

- Quartersawn period cabinetry, fine woodwork and detailing
- Brick & honed slab granite kitchen w/ professional DCS appliance
- Hand scraped hardwood flooring and custom tile on main Level
- State of the Art "HVAC equipment & ducts inside" energy design
- Energy Star certified at both State and Federal levels
- 95½% efficient furnace and OnDemand tankless water heater
- Full landscaping, irrigation, private park and water feature
- Superior West Salem location with mountain views
- Assurance of future value - exclusive Timbercraft neighborhood
- Master on main level with "no step" ADA home designs



Timbercraft Homes Inc.
Eric Jensen
(503) 399-8880
CCB# 125420
WWW.TIMBERCRAFTHOMES.NET