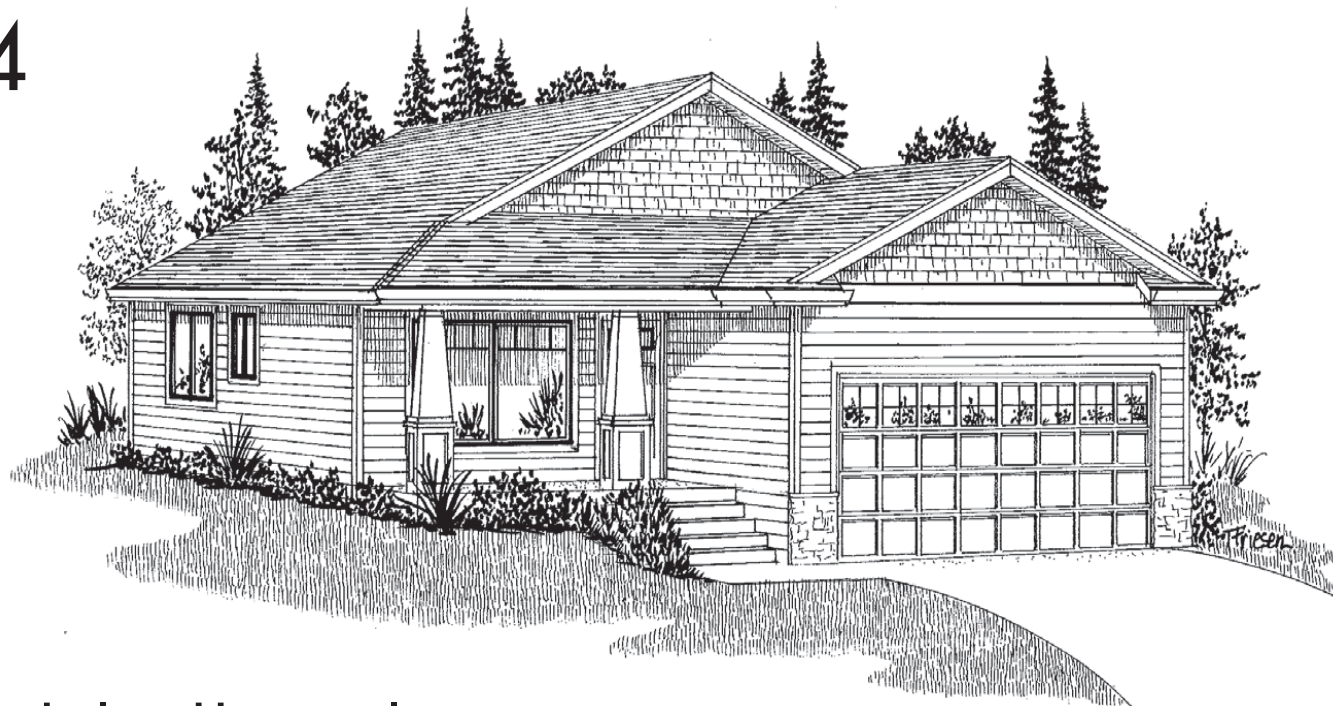


no. 14



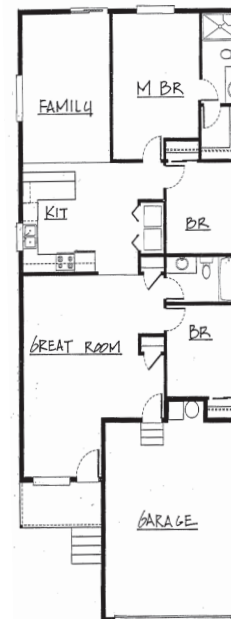
## Don Lulay Homes Inc.

1550 HARLANDALE AVENUE SE, SALEM | 1,412 SQ FT | 3 BR, 2 BA | \$ 199,900

Custom quality is made affordable by Don Lulay Homes, a 2nd generation builder, building homes in the Willamette Valley for over 40 years! We invite you to tour one of our more popular floor plans allowing optimal use of space. This Craftsman-style home includes the quality you'd find in much more expensive and larger homes. You'll notice the open plan, vaulted ceilings, and beautiful custom details throughout. This home is located in our development, Bramble Estates, just off Kuebler, in south Salem.

### features

- Single story with vaulted ceilings
- Custom cherry stained cabinetry
- 90 percent forced air gas furnace
- Stainless steel appliances
- Separate living room
- Family room open to kitchen with eating bar
- Large master bedroom with walk-in closet
- Custom wood laminate flooring
- Exterior home sided with Certainteed "concrete lap siding"
- Cultured-stone exterior accents



Don Lulay Homes Inc.  
Don Lulay  
(503) 363-3426  
CCB#152076  
[www.donlulayhomes.com](http://www.donlulayhomes.com)