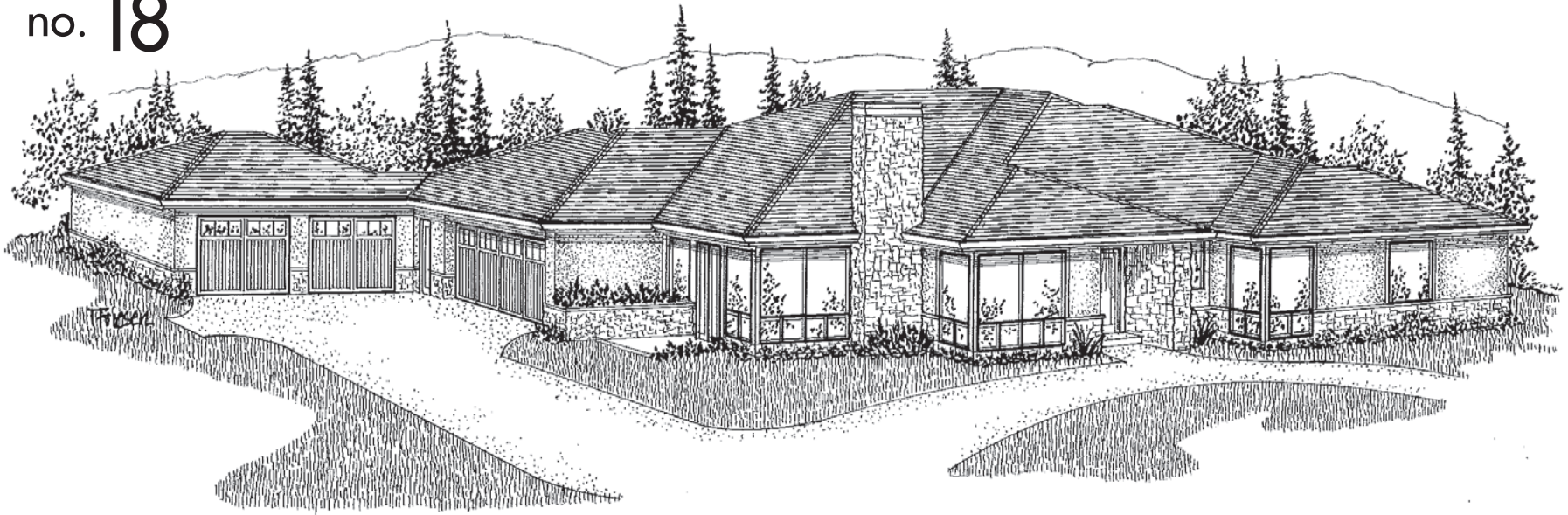


no. 18



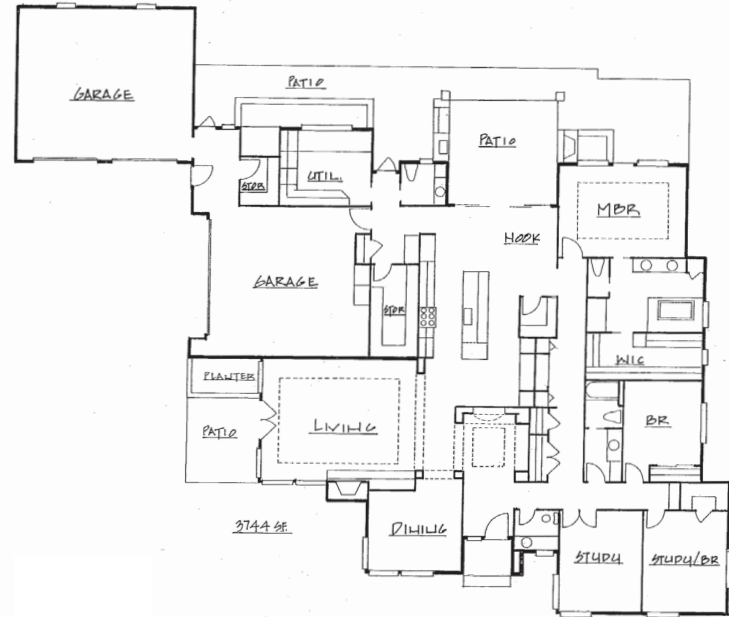
Kaufman Homes, Inc.

840 SAHALEE COURT SE, SALEM | 3,849 SQ FT | 3 BR, 2 FULL 2 HALF BA | \$ 1,065,000

This year's presentation is a Kaufman designed custom single level home in the beautiful Creekside area facing majestic views of Mount Hood and the Cascade Mountains.

The elegant, sleek exterior was created with a design of sweeping roofs carrying down through an exterior masonry chimney, stone planter bed and stone wainscot walls. Vertical cedar siding and walls of glass windows complete a graceful and grand exterior.

The interior of the home is open and spacious with the kitchen as the central focal point. Storage is abundant throughout the home with, two pantries, many closets and two double car garages. A large covered deck off the nook includes an outdoor kitchen area and fireplace, providing an additional living environment. The décor is a combination of painted wood, natural stained cabinets, hardwood and natural stone floors, and granite and quartz countertops.



features

- Granite and quartz counter tops
- Natural stone and hardwood floors
- Custom cabinets
- Velux skylights
- Combination of exposed aggregate and stamped concrete
- Honed garage floors
- Milgard Ultra fiberglass windows
- 95% efficient furnace and heat pump
- Security system

Kaufman
HOMES INC.



Kaufman Homes, Inc.
Dean and Duane Kaufman
(503) 370-8390
CCB#55421

WWW.KAUFMANHOMESINC.COM