

no. 21



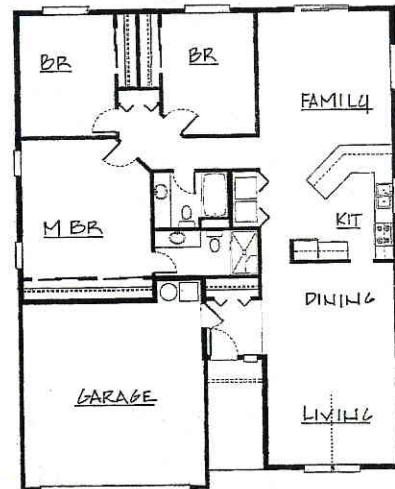
Don Lulay Homes Inc.

7288 EASTWOOD DRIVE, TURNER | 1,602 SQ FT | 3 BR, 2 BA | \$ 229,900

Custom quality is made affordable by Don Lulay Homes, a 2nd generation builder, building homes in the Willamette Valley for over 40 years! We invite you to tour one of our more popular floor plans allowing optimal use of space. This Craftsman-style home includes the quality you'd find in much more expensive homes. You'll notice the open plan, vaulted ceilings, and beautiful custom details throughout. This home is located in our development, Eastwood Heights, on the hill, just 5 minutes off Kuebler, in Turner.

features

- Beautiful large lots
- Wooded surroundings
- Area for RV parking
- Single story with vaulted ceilings
- Open living room with formal dining
- Family room open to large kitchen and eating bar
- Custom cabinetry
- High efficient forced air gas furnace
- Stainless steel appliances
- Large master bedroom with double wardrobe closets



Don Lulay Homes Inc.
 Don Lulay
 (503) 363-3426
 ccb#152076
www.donlulayhomes.com

204288