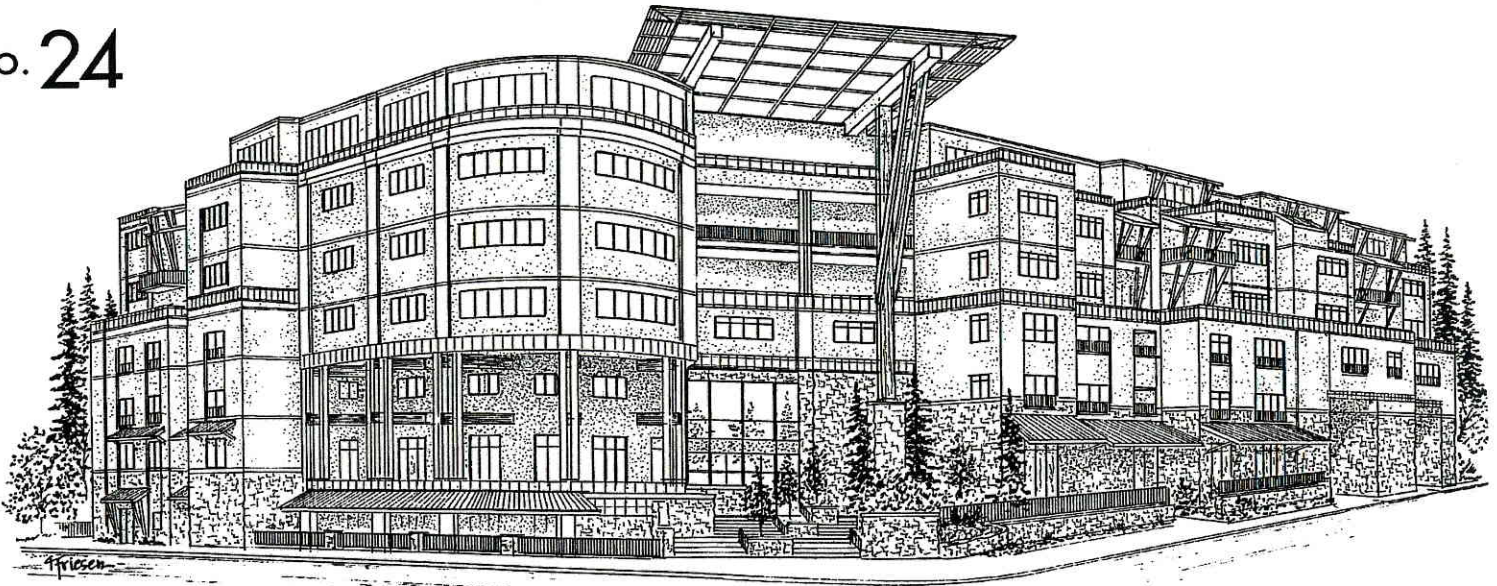


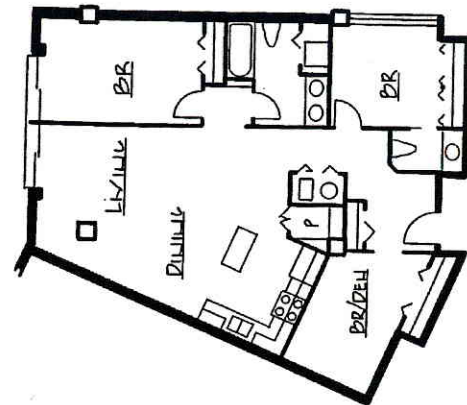
no. 24



The Meridian Luxury Residence Condominiums

777 COMMERCIAL STREET SE, SALEM | 1,387 SQ FT | 3 BR, 1.5 BA | \$ 347,790

Overlooking a natural wildlife refuge, The Meridian sets a new standard of luxury in Salem. Upon your arrival, you will be greeted by impressive water features encompassing bronze sculptures by world renown sculptor Lorenzo Ghiglieri. The Meridian's dramatic lobby features two spectacular water walls, towering ceilings, charming lighting accents and exquisite stone floors. Three interior elevators service the Meridian's underground secure parking and above ground levels. An on-site restaurant will be located on the Mission Street side of the building. Enjoy panoramic views of the Cascade Mountains, city lights, and Willamette River. Select a home that meets your needs. Pricing ranges from \$185,300 to \$1,129,950. Units vary in size from 792 to 2393 square feet. The 2009 Tour of Homes features UNIT 311 at 1387 square feet and sales price of \$347,790.



features

- Stone, brick and stained timbers compliment the exterior design
- Deeded covered parking space
- Deeded on-site storage unit
- Theater/Event Room and Fitness Center
- CAT 5 Ethernet cabling
- Security System w/ on-site cameras
- Enhanced sound isolation design throughout
- Rich stained cabinetry, tile and granite in kitchens and baths
- Beautiful Tigerwood hardwood floors
- Located near Convention Center, Library, Hospital and Bush Park



The Meridian
Commercial Concepts, Inc.
(541) 549-6323
CCB#186783
WWW.THEMERIDIAN.BIZ