



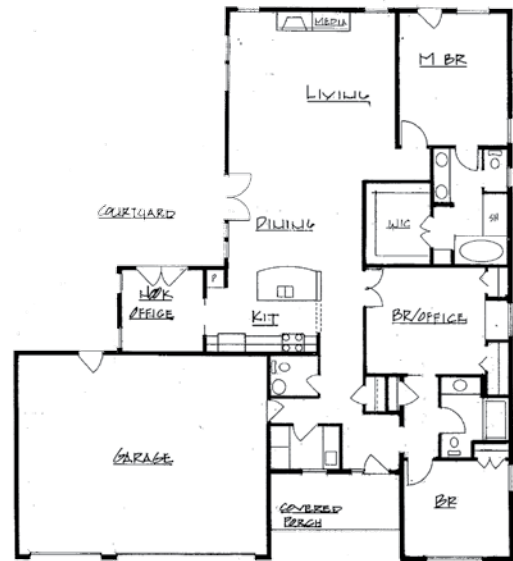
535 Tillicum Dr. SILVERTON

\$465,000 • 2,114 SQUARE FEET • 3 BEDROOMS • 2.5 BATHROOMS

We see the big picture. You want a sunlight-filled, low-maintenance, performance-tested, Energy-Star-qualified home with an "age-in-place" flexible floor plan and healthy indoor air. Our Tour home is located in upscale Abiqua Heights, featuring a 4-acre wooded commons with a pond and playground. Hardwood and tile throughout the home provide beauty, durability and dust-control. Two sets of French doors lead to a sunny courtyard. The secondary bedrooms could be offices or "away" rooms. The breakfast nook, with its pocket doors, might be an office or children's area. We'll see you in Silverton, with its "Nation's Top 100" hospital, charming downtown and The Oregon Garden.

FEATURES

- Real brick, 40-year shingles and "rainscreen" construction
- Granite slab countertops in the kitchen and powder room
- 36" gas cooktop
- Heat pump for economical heating/cooling; tankless hot water
- Beech cabinet boxes; no formaldehyde
- Pre-plumbed for solar hot water—rebates available when installed
- Durable fiberglass windows with paintable frames
- All reachable windows operable for comfort and ventilation
- R-60 attic insulation far exceeds Energy Star standards
- No-step entries; room for a wheelchair turnaround in the bathrooms
- Water-wise landscaping and upgrades available



Black's Construction
 Builder: Larry Black
 503-873-8998
 License #: 155169
www.blacks-construction.com